

---

***GIFTePay XML***  
***Installation & Configuration Guide***

---

***Valuelink***

*Version 4.10*

**Part Number: 8662.92 (ML)**  
**8662.93 (SL)**

# ***GIFTePay XML Installation & Configuration Guide***

Copyright © 2008 Datacap Systems Inc. All rights reserved.

This manual and the hardware/software described in it are copyrighted materials with all rights reserved. Under copyright laws, the manual and the information contained in it may not be copied, in whole or in part, without written consent from Datacap Systems, Inc., except as may be required in normal use to make a backup copy of the software. Our policy of continuous development may cause the information and specifications contained herein to change without notice.

Datacap, Datacap Systems, GIFTePay, DSIClient, ePay Administrator, WinPop and DataTran are trademarks of the Datacap Systems Inc.

Microsoft, Windows NT 4.0, Windows 2000 Professional, Windows XP and Windows 98 are either trademarks or registered trademarks of the Microsoft Corporation.

Other products or company names mentioned herein may be the trademarks or registered trademarks of their respective companies.

Printed in the United States of America

Revised: 6 June 2008

## ***Version Support***

This document supports the following application versions:

GIFTePay XML, Version 4.10 (Valuelink)

DSIClientX, Version 3.80

DSIClient Transaction Utility, Version 2.50

**Note:** All components of the release package 20080520 are Windows VISTA™ compliant.

## ***Payment Processor Support***

This document supports the following payment processor:

***Valuelink***

---

# CONTENTS

<b>Overview.....</b>	<b>5</b>
Introduction .....	5
About GIFTePay .....	5
About Datacap .....	5
What's Included on your CD .....	5
How it works.....	6
<b>Installation.....</b>	<b>7</b>
Introduction .....	7
Requirements.....	7
Server Requirements .....	7
Network Requirements .....	8
Installation Procedures .....	8
Accessing the GIFTePay CD-ROM .....	8
Installing/Upgrading Microsoft Internet Explorer .....	10
Installing GIFTePay .....	11
Installing DSIClientX.....	11
<b>GIFTePay Configuration &amp; Testing.....</b>	<b>12</b>
Introduction .....	12
Activation .....	12
Configuration.....	13
Networking Information .....	16
Testing .....	17
Important! - Before You Start .....	17
<b>Index .....</b>	<b>18</b>



# **OVERVIEW**

## **Introduction**

### **About GIFTePay**

Developed by Datacap Systems, *GIFTePay* enables retail, restaurant and other businesses to perform reliable gift card or prepaid card authorizations via the Internet or other TCP/IP Virtual Private Network (VPN) services in as little as two seconds or less.

*GIFTePay* is multi-threaded to accept simultaneous requests from multiple clients, and scalable so that customers can configure their store and enterprise system to fit their requirements and get the most favorable rates from their payment service

### **About Datacap**

Datacap Systems, Inc. develops and markets electronic payment interfaces that enable cash register and business systems developers to add electronic payment acceptance to their systems.

Datacap has various solutions that interface to virtually any hardware or software platform and send transactions to all major payment processors via most common communications technologies including dial, wireless, and Internet.

## **What's Included on your CD**

The *GIFTePay* CD-ROM includes client and server applications for Windows NT/2000/XP operating systems for both single and multi-pay point users.

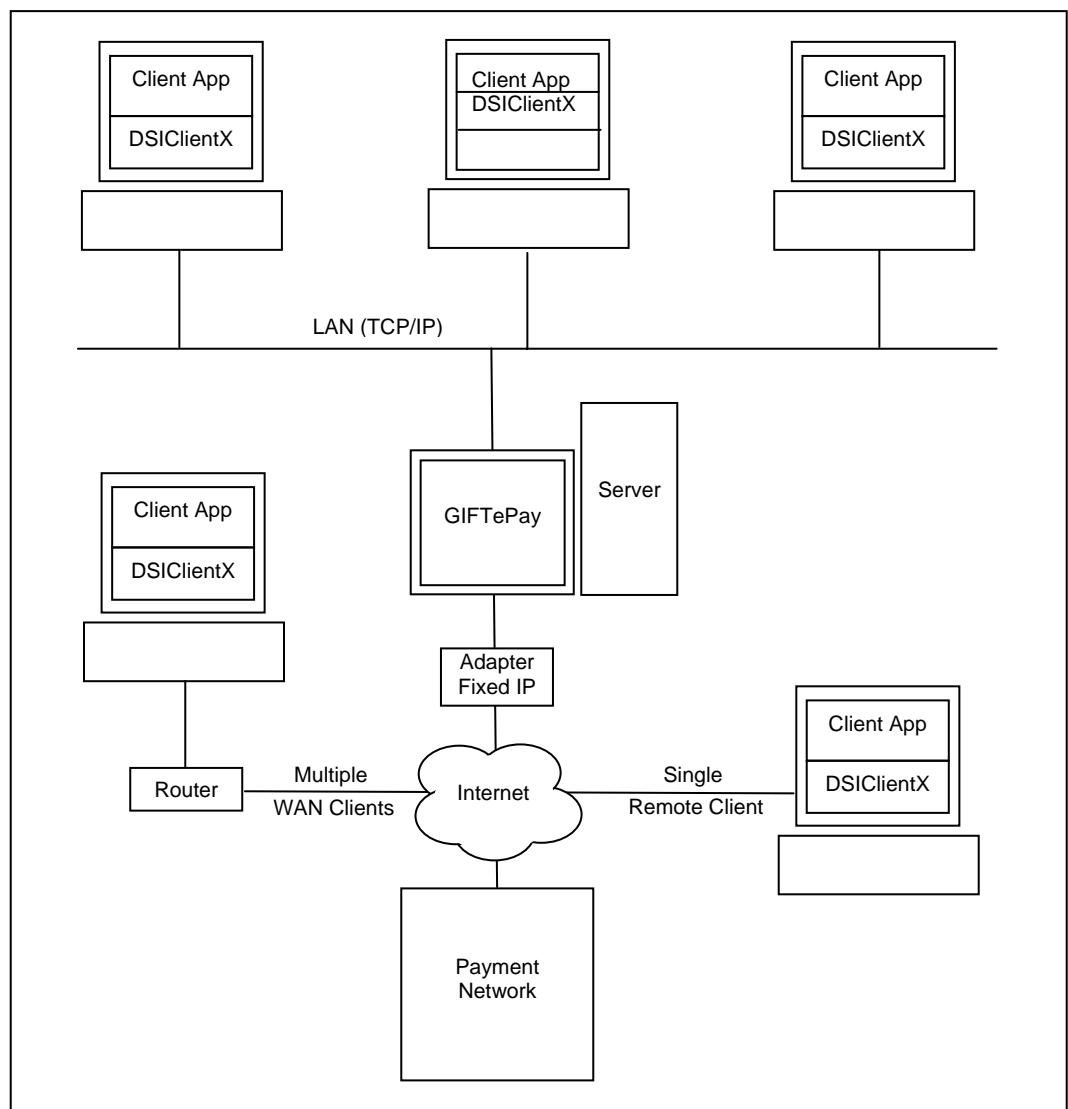
- ***GIFTePay*** – server-side software that enables you to process gift card or prepaid card authorization requests via the Internet or other TCP/IP Virtual Private Network (VPN) services.
- ***DSIClientX***– an XML ActiveX control that integrates into a Point of Sale or Restaurant application and sends encrypted gift card or prepaid card authorization requests from client machines on a LAN to *GIFTePay* for processing. *DSIClientX* also includes a utility program to enter payment transactions
- ***Microsoft Internet Explorer 6.0*** – this version (or later) of Microsoft Internet Explorer will ensure that you can install the necessary encryption capability required for *GIFTePay*.

## How it works

*GIFTePay* is an application that executes on a server (either at the store level or remotely, at the enterprise level) monitors encrypted transaction requests from client machines using a POS or restaurant application integrated with *DSIClientX*, Datacap's XML ActiveX control.

When *GIFTePay* receives an encrypted gift card or prepaid card transaction request from a client machine, it sends the request to the bankcard processor for approval via the Internet or other TCP/IP Virtual Private Network (VPN) services. The transactions are then stored in a database that resides on the server. *GIFTePay* makes use of 128-bit encryption to provide secure transactions over the Internet.

*GIFTePay* configurations are based on the capabilities of the various payment processors.



---

# **INSTALLATION**

## **Introduction**

This chapter explains how to install and configure the following *GIFTePay* components.

- *GIFTePay Server*
- *DSIClientX*
- *Microsoft Internet Explorer 6.0 (or later) with High Encryption*

You will need to install all the components on the server.

Each client machine will require that *DSIClientX* be installed.

If you are using version 5.1 (or later) of Microsoft Internet Explorer that already has high encryption, installation of Microsoft Internet Explorer 6.0 (or later) with High Encryption is optional. If you are using a version prior to 5.1, you must upgrade your Internet Explorer installation.

## **Requirements**

### **Server Requirements**

To successfully install and run *GIFTePay* on your server, it should meet or exceed the following system requirements:

- Microsoft Windows 2000 Professional with Service Pack 4 or, Windows XP Pro with Service Pack 2 or Windows VISTA. All latest updates and hotfixes should be applied.
- 512MB of RAM minimum, 1GB or higher recommended
- 10 GB of available hard-disk space
- Microsoft Internet Explorer with 128-bit encryption, Microsoft Internet Explorer 6.0 or higher recommended
- TCP/IP network connectivity.
- Persistent Internet Connection (DSL, cable, frame relay, etc.)

## Network Requirements

Before installing *GIFTePay* or any of its components, you should know the names and IP addresses of the servers receiving transactions. For remote servers or enterprise systems, it may be necessary to contact your network administrator or your merchant service provider.

You should also make port 9100 on the *GIFTePay* server available for incoming traffic if you are behind a firewall and connected to the default port.

If you are using a port other than the default IP port (9100), make sure you know the port on which the server is listening.

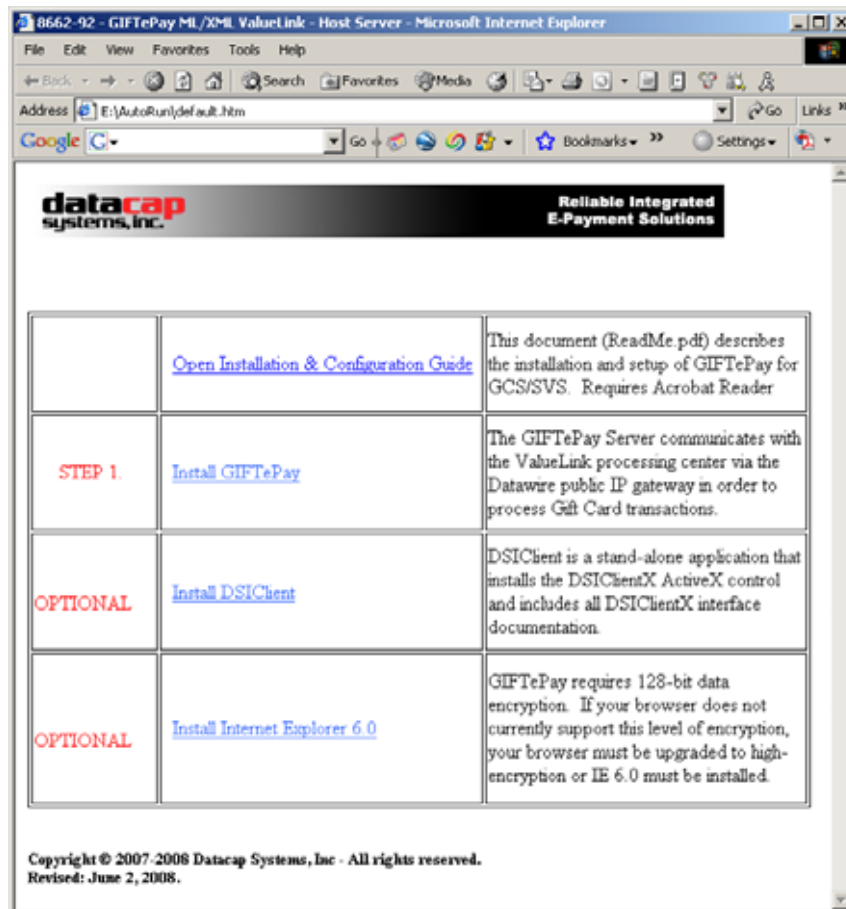
## Installation Procedures

### Accessing the GIFTePay CD-ROM

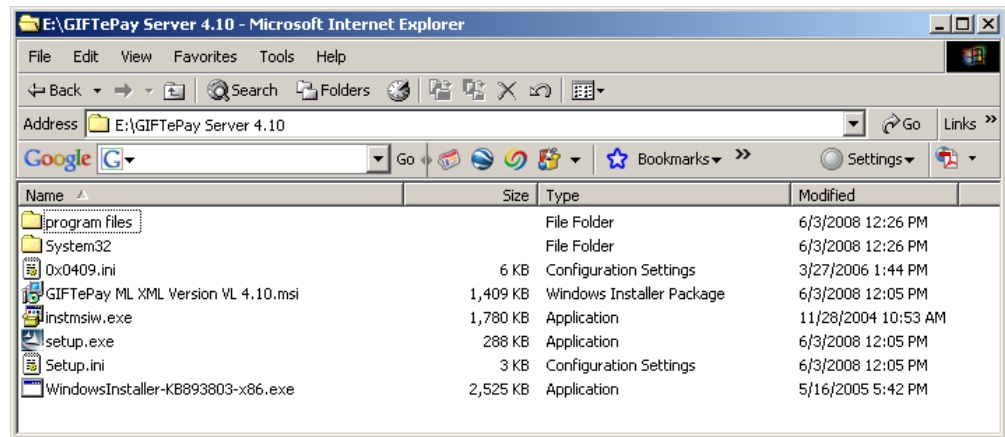
Before you begin installing *GIFTePay* and its components, you should close all unnecessary programs and disable any anti-virus software.

Use either of the following procedure to access the folders that contain the setup programs for *GIFTePay* and its components:

1. Insert the CD-ROM labeled “*GIFTePay*” into the server’s CD-ROM drive.  
If you have Window’s AUTORUN feature enabled for your CD/DVD, then you will be presented with the following window:



2. If AUTORUN is not enabled on your system, then you should open **My Computer**, and then double-click the drive that contains the *GIFTePay* CD-ROM. The following window appears:



From this window, you can install *GIFTePay* and its components.

## ***Installing/Upgrading Microsoft Internet Explorer***

If needed, you can install or upgrade your server and each computer on the LAN with a version of Microsoft Internet Explorer that supports 128-bit encryption.

If needed, you can use the Windows Update on each PC to upgrade an existing version, or install a copy of Microsoft Internet Explorer 6.0 (or later) included on the *GIFTePay* CD-ROM.

## ***Determining the Encryption Strength***

To determine if a PC has the necessary encryption to run *GIFTePay*:

1. Launch **Internet Explorer**.
2. From the Internet Explorer menu bar, select **Help** and choose **About Internet Explorer**. The following window (or something similar), should appear:



3. The Cipher Strength should indicate 128-bit. If not, you must update your version of Internet Explorer.
4. Click **OK** to close the window.

## ***Installing Microsoft Internet Explorer***

To install Microsoft Internet Explorer 6.0:

1. Open the Microsoft Internet Explorer folder on the *GIFTePay* CD-ROM and double-click the **Microsoft Internet Explorer 60 High Encryption** folder.
2. Double-click the **i386** folder.
3. Double-click **setup.exe**.
4. Click **Install Internet Explorer 6 and Internet Tools**.
5. Follow the on-screen instructions.

## ***Installing GIFTePay***

To install the GIFTePay Server software:

1. Open the GIFTePay Server folder on the *GIFTePay* CD-ROM and double-click, **setup.exe**.
2. The installation wizard will start. When the Welcome screen appears, click **Next**.
3. Read and accept the End User License agreement and click **Next**.
4. Enter your **User Name** and **Organization**.  
If available on your operating system, make the application available to all users.
5. Click **Next**, then click **Install**. The installation wizard will then begin installing the necessary files on your computer.
6. Click **Finish** to complete the installation. A pop-up message will then appear and inform you to restart the computer.
7. Click **Yes** to restart the computer.

## ***Installing DSIClientX***

To install *DSIClientX* (includes the DSIClient Transaction Utility):

1. Open the DSIClient folder on the *GIFTePay* CD-ROM and double-click, **setup.exe**.
2. The installation wizard will start. When the Welcome screen appears, click **Next**.
3. Read and accept the End User License agreement and click **Next**.
4. Read the notes pertaining to *DSIClient* installation and click **Next**.
5. Enter your User Name and Organization.  
If available on your operating system, make the application available to all users.
6. Click **Next**, then click **Install**. The installation wizard will then begin installing the necessary files on your computer.
7. Click **Finish** to complete the installation. A pop-up message will then appear and inform you to restart the computer.
8. Click **Yes** to restart the computer.

**NOTE:** You may install *DSIClientX* (and the *DSIClient Transaction Utility*) on another computer(s) that are on a local area network with the computer running the *GIFTePay* server.

# ***GIFTePay* CONFIGURATION & TESTING**

## ***Introduction***

This chapter explains how to activate and configure *GIFTePay* for use.

*GIFTePay* is sent to you as a fully functional software application for 10 calendar days before requiring entry of an activation code by Datacap Systems.

If *GIFTePay* has not been activated by Datacap within those 10 days, it will decline all requests and return a “Must Activate *GIFTePay*” message to the POS terminal, indicating that the initial activation period has expired.

You will then have the option to extend the activation period for one additional 10-day period via the activation screen. If an activation code is not entered during the second activation period, *GIFTePay* will decline all requests and return a “Must Activate *GIFTePay*” message until an activation code is entered.

## ***Activation***

During installation, *GIFTePay* generates a Session Code and Machine ID that are unique to that PC and required for permanent operation of *GIFTePay* on that machine.

Simply submit those numbers to Datacap by using one of the following methods to obtain an activation code:

- Contact the Sales Department at (215) 997-8989 and provide the two uniquely generated numbers. Datacap will register your software and provide you an individualized activation code.
- E-mail the numbers to Datacap and receive your activation code via return E-mail.

Send an email message to [activate@dcap.com](mailto:activate@dcap.com) with **GIFTePay Activation** in the Subject line. The body of the message should contain:

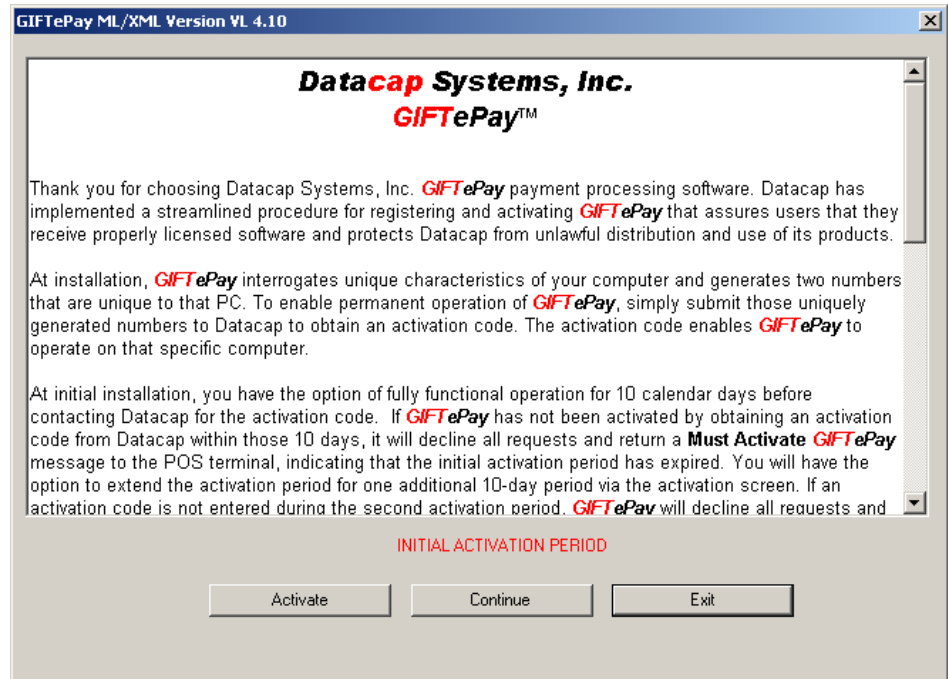
1. Your Name
2. Telephone Number
3. Serial Number
4. Session Code
5. Machine ID

The Serial Number, Session Code and Machine ID appear in the Activation dialog box and can be copied and pasted into the body of the E-mail message.

# Configuration

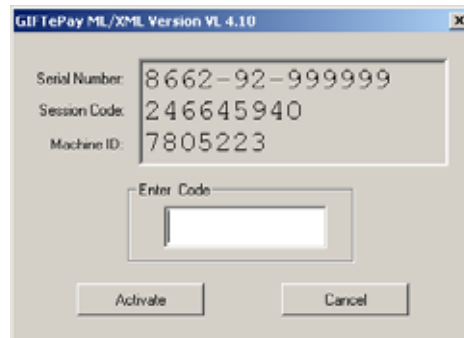
To activate and set up *GIFTePay* for use:

1. From the Desktop, double-click the **GIFTePay icon** The Initial Activation dialog box appears.

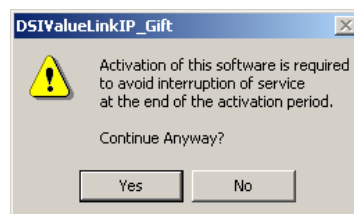


**NOTE:** The Initial Activation dialog box will appear each time you start *GIFTePay* until you activate it.

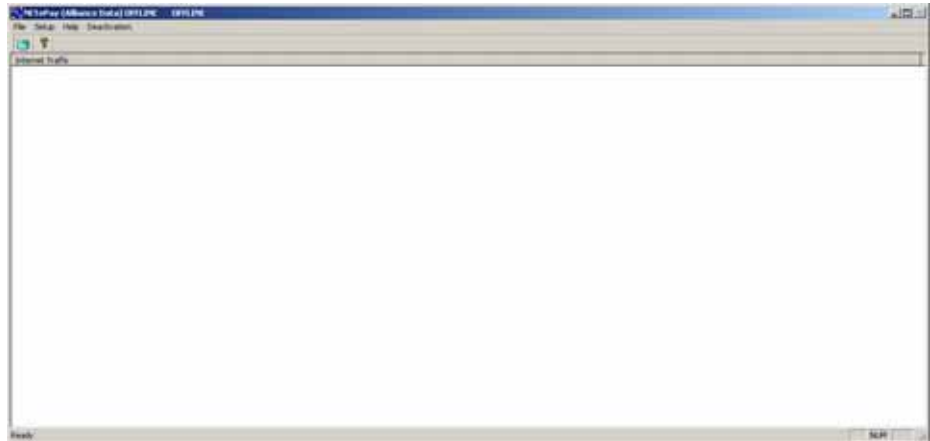
2. To enter the activation code, click **Activate**. When the activation dialog box appears, type the activation code in the box provided and click **Activate**



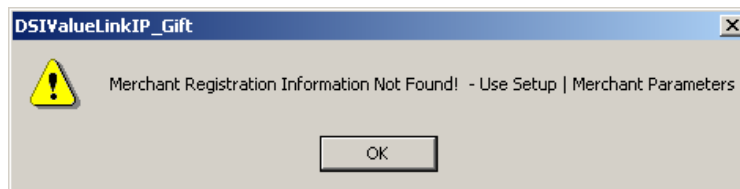
3. To proceed without activation, click **Continue**. When the message indicating that activation is required to avoid interruption of service appears, click **Yes** to continue.



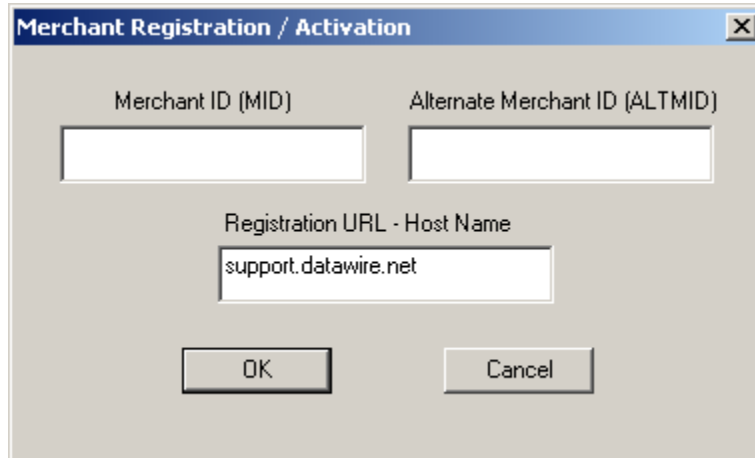
- In either case, *GIFTePay* appears.



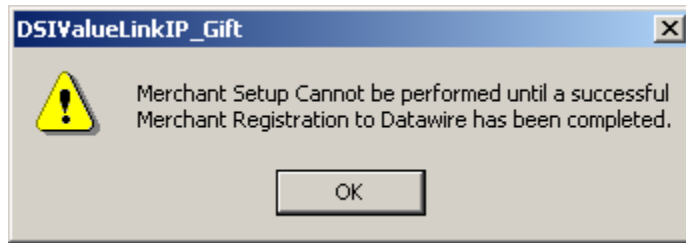
**NOTE:** During your initial access of *GIFTePay*, the following message will appear indicating that merchant registration information HAS NOT YET BEEN OBTAINED FROM Datawire. Click **OK** to continue.



- From the *GIFTePay* menu bar, select **Setup** and choose **Merchant Parameters**. The **Merchant Registration/Activation** dialog box appears.



- In the **Merchant Registration/Activation** dialog, enter the Valuelink Merchant information including **Merchant ID** (11 characters) and the **Alternate Merchant ID** (11 characters).  
The Merchant Information required for this section is supplied by Valuelink or your merchant services provider.
- GIFTePay* will use the entered Merchant ID and Alternate Merchant ID to download a merchant profile from Valuelink's Internet gateway operator (Datawire) over the internet. If there is an error during the Datawire registration process, the following dialog will be displayed:



This indicates that GIFTePay attempted to finish automatic completion of the merchant programming but encountered an error. Check the Internet connection and verify the Merchant ID and Alternate Merchant ID entered in the setup screen. If this does not rectify the problem, contact your Valuelink or Datawire representative.

8. If the Datawire registration process is successful, then the following setup screen will be displayed:

9. In the **Merchant Information** section, most of the profile is automatically provided by the download from Datawire. The automatically supplied settings in this section are not changeable by the user but are displayed for verification purposes. The Terminal ID may be entered if supplied by Valuelink or Datawire; it is exactly 4 digits.
10. Under the **IP Connection Information** section, you set the time in seconds to attempt an IP connection for each transaction before switching to dial for processing (if enabled). Allowable values are 3 to 40 seconds.
11. Under the **Local Currency Selection** section, you must specify which service/currency you will be using. Valuelink will specify your service and currency information.
12. Under the **Security** section, you may select whether you want to use a password protection on communications between clients and the server. If you are using *GIFTePay* in a Wide Area Network (WAN) that uses an Internet connection, you should enable Client/Server password protection to prevent unauthorized use of *GIFTePay*. If you want to enable Client/Server Password operation, click the **Client/Server Password** box and enter the password to be used by the server in the box below the checkbox.

**NOTE:** You must also configure *DSIClientX* and *ePay Administrator* for Client/Server password protection using the same password to use this function.

13. Under the **Transport** section, you can select the method of communications to the Valuelink processing host.
  - **IP Only** – Select this option if you want GIFTePay to use only the Internet to process transaction with the Valuelink host.
  - **IP with Dial Backup** – Select this option if you want to use the Internet as the primary means of communication with Valuelink and to have automatic direct dial backup operation occur when Internet service is interrupted. This option requires that you install a Datacap DialLink modem on an available COM port. *GIFTePay only operates with a Datacap DialLink modem for backup operations – third party modems are not supported.*
  - **Dial Only** – Select this option if you want to use the Datacap DialLink modem and phone line as the primary means of communication with Paymentech. This option requires that you install a Datacap DialLink modem on an available COM port. *GIFTePay only operates with a Datacap DialLink modem for dialup operations – third party modems are not supported.*
14. Under the **Dial Backup Information** section, you set parameters related to dial backup.
  - **Comm Port** – Select the COM port number where the Datacap DialLink modem is attached. Make sure not to use a port number used by another device. Allowable ports are 1-255.
  - **Dial Prefix** – If the phone system being used with the Datacap DialLink modem requires dialing a prefix to get an outside or long distance line, enter it here. A ‘W’ (wait for dial tone) or a ‘,’ (comma – wait 2 seconds before dialing next digit) are the most common along with 8 or 9. For example “8,” would wait two seconds after going off hook before dialing the number in the Valuelink Authorization Phone Number text box.
  - **Valuelink Authorization Phone Number** – This number will automatically be filled in for the recommended access number to Valuelink. You may change this number if you are having problems reliably communicating with the host. Contact your merchant service provider or Valuelink directly to obtain alternate access phone number(s).
15. After completing the configuration settings, click **OK** to save the settings and exit the dialog box. If you want to quit without any changes being applied, click **Cancel**.

## Networking Information

The *GIFTePay* server listens for transactions requests from clients on TCP port 9001. If your network employs firewalls and/or routers which restrict certain traffic, verify that access to that port is allowed.

# Testing

## **Important! - Before You Start**

You should arrange with your bank and payment processor for testing *GIFTePay* and all other related components before going live.

**It is the sole responsibility of the merchant account holder to verify that the merchant information entered into *GIFTePay* is correct.**

**You should only process actual payments after verification that all test transactions have been successfully deposited.**

Datacap Systems is not responsible for typographical errors, data entry errors or any other inaccuracies arising out of the creation and/or downloading of merchant data.

Furthermore, Datacap Systems shall not be liable for any errors or for incidental or consequential damages in connection with the use of the software or other programmed information, including customer supplied or Datacap supplied information.

---

# INDEX

## A

About  
  Datacap, 5  
  GIFTePay, 5

## D

Determining the Encryption Strength, 10  
DSIClient Transaction Utility  
  Installation, 11  
DSIClientX Installation, 11

## H

How it works, 6

## I

Installation, 7  
Installation Procedures, 8  
  Accessing the NETePay CD-ROM, 8  
  DSIClient Transaction Utility, 11  
  DSIClientX, 11  
  Microsoft Internet Explorer, 10  
  GIFTePay, 11

## M

Microsoft Internet Explorer  
  Determining the Encryption Strength, 10  
  Installation, 10

## N

GIFTePay  
  Activation, 12  
  Configuration, 13  
  Installation, 11  
  Testing, 17  
Network Requirements, 8

## O

Overview, 5

## R

Requirements  
  Network, 8  
  Server, 7

## S

Server Requirements, 7

## U

Upgrading Microsoft Internet Explorer, 10

## W

What's Included on your CD, 5