
NETePay XML 4.0
Installation & Configuration Guide

Global Host US
Supporting US Debit and Dial Backup

Part Number: 8660.22 (ML) - 4.14
8660.23 (SL) - 4.14

NETePay XML 4.0 Installation & Configuration Guide

Copyright © 2009 Datacap Systems Inc. All rights reserved.

This manual and the hardware/software described in it are copyrighted materials with all rights reserved. Under copyright laws, the manual and the information contained in it may not be copied, in whole or in part, without written consent from Datacap Systems, Inc., except as may be required in normal use to make a backup copy of the software. Our policy of continuous development may cause the information and specifications contained herein to change without notice.

Datacap, Datacap Systems, NETePay, DIALePay, DSIClient, DSIClientX, ePay Administrator, IPTTran, TwinTran, DialTran, DataTran are trademarks of the Datacap Systems Inc.

Microsoft, Windows NT 4.0, Windows 2000 Professional, Windows XP, Windows Server 2003, Windows Server 2008, Windows Vista and Windows 98 are registered trademarks of the Microsoft Corporation.

Other products or company names mentioned herein may be the trademarks or registered trademarks of their respective companies.

Revised: 15 January 2009

Version Support

This document supports the following application versions:

NETePay XML 4.0, 4.14 GPS US Host

DSIClientX, Version 3.84

DSIClient Transaction Utility, Version 2.50

Payment Processor Support

This document supports the following payment processor:

Global Host US (Supporting US Debit and Dial Backup)

CONTENTS

Overview.....	5
Introduction	5
About NETePay with Dial Backup.....	5
About Datacap	5
What's Included on your CD	5
How it works.....	6
Security Considerations.....	7
Introduction	7
NETePay Compliance.....	8
POS System Considerations.....	8
Networking Considerations	8
What's at Stake for Merchants	8
Security Action Plan	9
More Information.....	9
Installation.....	10
Introduction	10
Requirements.....	10
Baseline System Configuration.....	10
Network Requirements	11
Installation Procedures	11
Accessing the NETePay CD-ROM	11
Installing/Upgrading Microsoft Internet Explorer	13
Installing NETePay (Required)	14
Installing DSIClientX (Optional)	14
Installing Datacap DialLink modem (Required for Dial Operations)	14
NETePay Configuration & Testing.....	16
Introduction	16
Activation	16
Configuration.....	17
Testing	20
Important! - Before You Start.....	20
Operational Considerations.....	20
Important!.....	20
Using the DSIClient Transaction Utility	22
Introduction	22
Supported Transaction Types.....	22
DSIClient Transaction Utility Setup	23
Verifone 2000 PIN pad Setup	25
PDC Setup.....	26
Processing Test Transactions.....	28
Index	30

OVERVIEW

Introduction

About NETePay with Dial Backup

Developed by Datacap Systems, *NETePay* enables retail, restaurant and other businesses to perform fast electronic payment authorizations via the Internet. *NETePay* also incorporates automatic dialup backup direct to the processing host in the event of an Internet outage. The dial backup operation is completely automatic and switches back to Internet operation without operator intervention.

NETePay is multi-threaded to accept simultaneous requests from multiple clients, and scalable so that customers can configure their store systems to fit their requirements and get the most favorable rates from their payment service.

NETePay is available in two versions: SL and ML. The SL (Single Lane) version is designed for single station, non-LAN POS systems; the ML (Multi Lane) version is designed for multiple POS stations on a LAN. This User Guide is applicable to both versions.

About Datacap

Datacap Systems, Inc. develops and markets electronic payment interfaces that enable cash register and business systems developers to add electronic payment acceptance to their systems.

Datacap has various solutions that interface to virtually any hardware or software platform and send transactions to all major payment processors via most common communications technologies including dial, wireless, and Internet.

What's Included on your CD

The *NETePay* CD-ROM includes client and server applications for Windows NT/2000/XP operating systems for both single and multi-pay point users.

- ***NETePay*** – server-side software that enables you to process payment authorization requests via the Internet or other TCP/IP Virtual Private Network (VPN) services.
- ***DSIClientX***– an XML ActiveX control that integrates into a Point of Sale or Restaurant application and sends encrypted payment authorization requests from client machines on a LAN to *NETePay* for processing. *DSIClientX* also includes a utility program to enter payment transactions
- ***Microsoft Internet Explorer 6.0*** – this version (or later) of Microsoft Internet Explorer will ensure that you can install the necessary encryption capability required for *NETePay*.

How it works

NETePay is an application that resides on a server (either at the store level or remotely, at the enterprise level) monitors encrypted transaction requests from client machines using a POS or restaurant application integrated with *DSIClientX*, Datacap's XML ActiveX control.

When *NETePay* receives an encrypted transaction request from a client machine, it sends the request to the bankcard processor for approval via the Internet or PSTN dialup direct to the processing host. The transactions are then stored in a database that resides on the server. *NETePay* makes use of 128-bit encryption to provide secure transactions over the Internet.

SECURITY CONSIDERATIONS

Introduction

Systems which process payment transactions necessarily handle sensitive cardholder account information. The card associations (VISA, MasterCard) have developed security standards for handling cardholder information in a published document named *Payment Card Industry (PCI) Data Security Standard*.

The security requirements defined in the standard apply to all members, merchants, and service providers that store, process or transmit cardholder data.

The PCI Data Security Requirements apply to all **system components** which is defined as any **network component, server, or application** included in, or connected to, the cardholder data environment. Network components, include, but are not limited to, firewalls, switches, routers, wireless access points, network appliances, and other security appliances. Servers include, but are not limited to, Web, database, authentication, Domain Name Service (DNS), mail, proxy, and Network Time Protocol (NTP). Applications include all purchased and custom applications, including internal and external (Web) applications.

The following **12 Requirements** comprise the Payment Card Industry Data Security Standard.

Build and Maintain a Secure Network

1. Install and maintain a firewall configuration to protect data
2. Do not use vendor-supplied defaults for system passwords and other security parameters

Protect Cardholder Data

3. Protect Stored Data
4. Encrypt transmission of cardholder data and sensitive information across public networks

Maintain a Vulnerability Management Program

5. Use and regularly update anti-virus software
6. Develop and maintain secure systems and applications

Implement Strong Access Control Measures

7. Restrict access to data by business need-to-know
8. Assign a unique ID to each person with computer access
9. Restrict physical access to cardholder data

Regularly Monitor and Test Networks

10. Track and monitor all access to network resources and cardholder data
11. Regularly test security systems and processes

Maintain an Information Security Policy

12. Maintain a policy that addresses information security

NETePay Compliance

All versions of **NETePay** at or above Version 4.00 implement all of the PCI Data Security Standard requirements which are applicable to a payment processing application.

- **NETePay** does not store any magnetic stripe (Track 1 or 2), card verification (CVV, CVV2, etc.) or PIN data, ever.
- **NETePay** truncates all account and expiration date information for transactions which have been settled in every area where it is either stored or displayed.
- **NETePay** encrypts account numbers and expiration dates for transactions which have not yet been settled.
- **NETePay** logs only record truncated account number and expiration date information and never record any magnetic stripe (Track 1 or 2), card verification (CVV, CVV2, etc) or PIN data, ever.
- **NETePay** utilities which present data in a user interface (display or print) always truncate account number and expiration date data and never display magnetic stripe (Track 1 or 2), card verification (CVV, CVV2, etc) or PIN data, ever.
- **NETePay** encrypts all transmissions which contain cardholder data.

POS System Considerations

Although **NETePay** implements all of the PCI Data Security Standard requirements which are applicable to a payment processing application, your POS application may not handle cardholder information in such a secure fashion.

PCI Data Security requirements must be implemented in all the components of a system which handle cardholder data in order to provide comprehensive security. The PCI Data Security requirements *must* be implemented in your POS system and any other applications which handle cardholder data. You should verify with your POS system provider that the version of the POS software you are using is compliant.

Networking Considerations

NETePay is designed to operate on a local area network (LAN). Your store LAN can be vulnerable to attempts to steal data, particularly if it is connected to an outside network (Internet, WAN, VPL, etc.) in either a wired or wireless manner. The PCI Data Security requirements which apply to networks must be implemented to provide comprehensive data security.

What's at Stake for Merchants

Most merchants do not design and create their own store POS systems. However, the PCI Data Security Standard specifically includes the merchant in the chain of responsibility for secure data handling. This responsibility includes the possibility of significant fines and compensation payments for any security breaches tracked to a merchant. The possible fines are considerable (up to \$500,000) and the compensation for losses is essentially unbounded. Compared to the possible liabilities, the implementation of compliant security systems and practices is a bargain.

Security Action Plan

A comprehensive approach to assessing the security compliance of your entire system is necessary to protect you and your data. The following is a basic plan every merchant should adopt.

1. Read the PCI Standard in full and perform a security gap analysis. Identify any gaps between existing practices in your organization and those outlined by the PCI requirements.
2. Create an action plan for on-going compliance and assessment. Once the gaps are identified, companies must determine the steps needed to close the gaps and protect cardholder data. It could mean adding new technologies to shore up firewall and perimeter controls, or increasing the logging and archiving procedures associated with transaction data.
3. Implement, monitor and maintain the plan. Compliance is not a one-time event. Regardless of merchant or service provider level, all entities must complete annual self-assessments using the PCI Self Assessment Questionnaire.
4. Call in outside experts as needed. Visa has published a Qualified Security Assessor List of companies that can conduct on-site CISP compliance audits for Level 1 Merchants, and Level 1 and 2 Service Providers. MasterCard has a Compliant Security Vendor List of SDP-approved scanning vendors.

More Information

You may download a copy of the *Payment Card Industry (PCI) Data Security Standard* from VISA's security website at the following Internet address:

http://usa.visa.com/business/accepting_visa/ops_risk_management/cisp.html

Additional information for merchants from VISA is available at the following Internet address:

http://usa.visa.com/business/accepting_visa/ops_risk_management/cisp_merchants.html?it=ill/business/accepting_visa/ops_risk_management/cisp.html|Merchants

Listing of qualified security assessors from VISA is available at the following Internet address:

http://usa.visa.com/business/accepting_visa/ops_risk_management/cisp_accessors.html?it=il2/business/accepting_visa/ops_risk_management/cisp_merchants%2Ehtml|Assessors

INSTALLATION

Introduction

This chapter explains how to install and configure the following *NETePay* components.

- *NETePay*
- *DSIClientX*
- Microsoft Internet Explorer 6.0 (or later) with High Encryption

You will need to install all the components on the server.

Each client machine will require that *DSIClientX* be installed.

If you are using version 5.1 (or later) of Microsoft Internet Explorer that already has high encryption, installation of Microsoft Internet Explorer 6.0 (or later) with High Encryption is optional. If you are using a version prior to 5.1, you must upgrade your Internet Explorer installation.

Requirements

Baseline System Configuration

To successfully install and run *NETePay* on your server, it should meet or exceed the following system requirements:

- Microsoft Windows 2000 Professional with Service Pack 4, Windows XP Pro with Service Pack 2, Windows Vista Business Edition, Windows Server 2003 or 2008. All latest updates and hotfixes should be applied.
- 1 GB of RAM minimum, 2 GB or higher recommended
- 5 GB of available hard-disk space
- Microsoft Internet Explorer with 128-bit encryption, Microsoft Internet Explorer 6.0 or higher recommended
- TCP/IP network connectivity.
- Available COM port (if using dial backup or dial primary communications)
- Datacap DialLink modem (if using dial backup or dial primary communications)
- Persistent Internet Connection (DSL, cable, frame relay, etc.)

Network Requirements

- Before installing *NETePay* or any of its components, you should know the names and IP addresses of the servers receiving transactions. For remote servers or enterprise systems, it may be necessary to contact your network administrator or your merchant service provider
- You should also make port 9000 on the *NETePay* server available for incoming traffic if you are behind a firewall and connected to the default port.

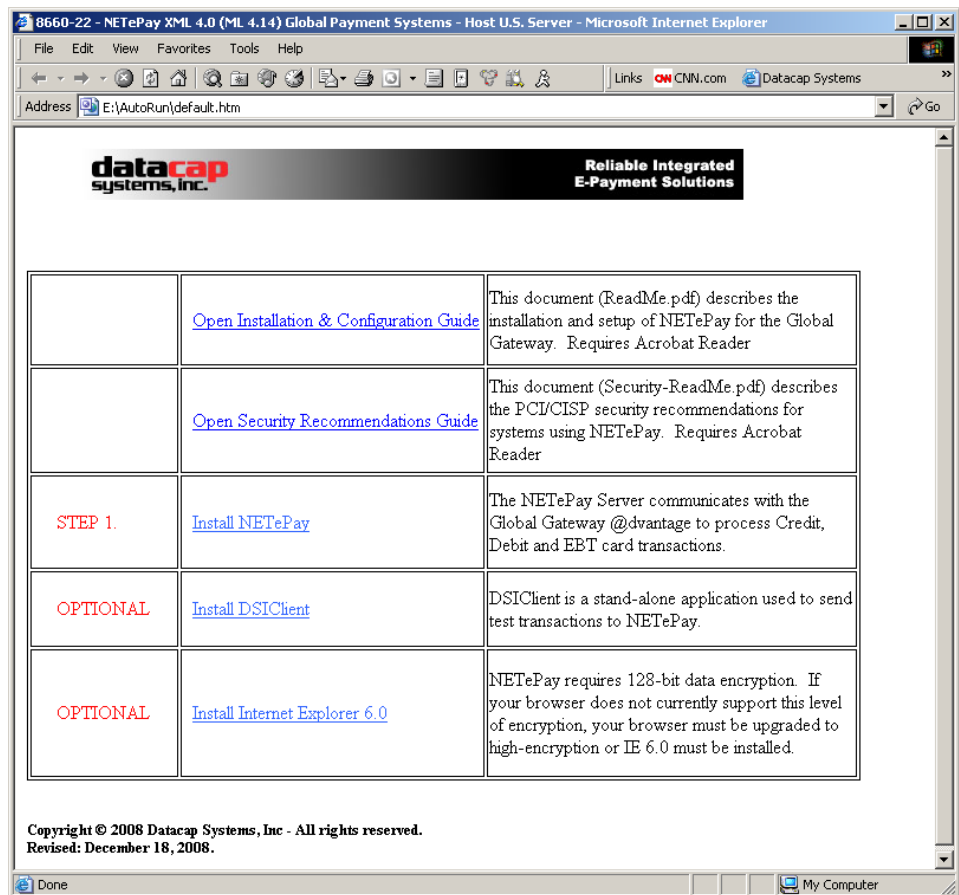
Installation Procedures

Accessing the NETePay CD-ROM

Before you begin installing *NETePay* and its components, you should close all unnecessary programs and disable any anti-virus software.

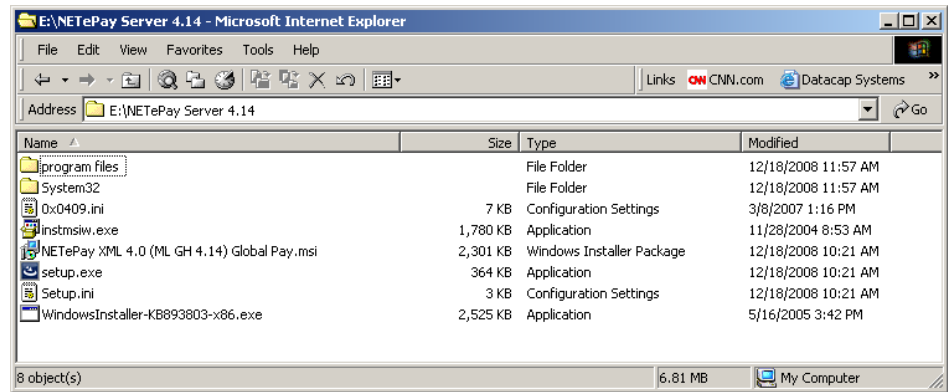
Use either of the following procedure to access the folders that contain the setup programs for *NETePay* and its components:

1. Insert the CD-ROM labeled *NETePay* into the server's CD-ROM drive.
If you have Window's AUTORUN feature enabled for your CD/DVD, then you will be presented with the following window:



2. If AUTORUN is not enabled on your system, then you should open **My Computer**, and then double-click the drive that contains the *NETePay* CD-ROM. The following window

appears. Double click SETUP (or SETUP.EXE) to install NETePay.



From either of these windows, you can install *NETePay* and its components.

Installing/Upgrading Microsoft Internet Explorer

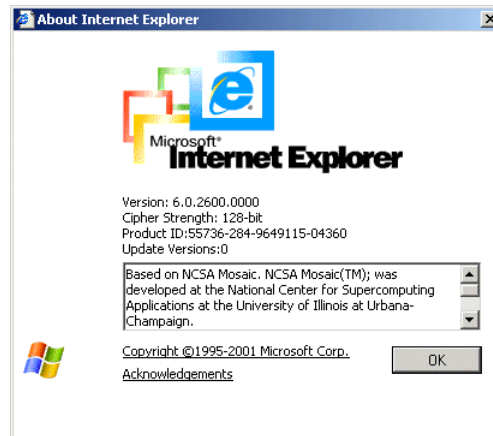
If needed, you can install or upgrade your server and each computer on the LAN with a version of Microsoft Internet Explorer that supports 128-bit encryption.

If needed, you can use the Windows Update on each PC to upgrade an existing version, or install a copy of Microsoft Internet Explorer 6.0 (or later) included on the *NETePay* CD-ROM.

Determining the Encryption Strength

To determine if a PC has the necessary encryption to run *NETePay*:

1. Launch **Internet Explorer**.
2. From the Internet Explorer menu bar, select **Help** and choose **About Internet Explorer**. The following window (or something similar), should appear:



3. The Cipher Strength should indicate 128-bit. If not, you must update your version of Internet Explorer.
4. Click **OK** to close the window.

Installing Microsoft Internet Explorer

To install Microsoft Internet Explorer 6.0:

1. Open the Microsoft Internet Explorer folder on the *NETePay* CD-ROM and double-click the **Microsoft Internet Explorer 60 High Encryption** folder.
2. Double-click the **i386** folder.
3. Double-click **setup.exe**.
4. Click **Install Internet Explorer 6 and Internet Tools**.
5. Follow the on-screen instructions.

Installing NETePay (Required)

To install the NETePay Server software:

1. Open the NETePay Server folder on the *NETePay* CD-ROM and double-click, **setup.exe**.
2. The installation wizard will start. When the Welcome screen appears, click **Next**.
3. Read and accept the End User License agreement and click **Next**.
4. Enter your **User Name** and **Organization**.
If available on your operating system, make the application available to all users.
5. Click **Next**, then click **Install**. The installation wizard will then begin installing the necessary files on your computer.
6. Click **Finish** to complete the installation. A pop-up message will then appear and inform you to restart the computer.
7. Click **Yes** to restart the computer.

Installing DSIClientX (Optional)

To install *DSIClientX* (includes the DSIClient Transaction Utility):

1. Open the DSIClient folder on the *NETePay* CD-ROM and double-click, **setup.exe**.
2. The installation wizard will start. When the Welcome screen appears, click **Next**.
3. Read and accept the End User License agreement and click **Next**.
4. Read the notes pertaining to *DSIClient* installation and click **Next**.
5. Enter your User Name and Organization.
6. If available on your operating system, make the application available to all users.
7. Click **Next**, then click **Install**. The installation wizard will then begin installing the necessary files on your computer.
8. Click **Finish** to complete the installation. A pop-up message will then appear and inform you to restart the computer.
9. Click **Yes** to restart the computer.

NOTE: You may install *DSIClientX* (and the *DSIClient Transaction Utility*) on another computer(s) that are on a local area network with the computer running the *NETePay* server.

Installing Datacap DialLink modem (Required for Dial Operations)

Note: To use the dial capabilities of *NETePay* (either as backup or primary communications), a *Datacap DialLink* modem (not a *DataTran*) must be attached to an available COM port on the PC.

To install the *Datacap DialLink* modem for *NETePay*:

1. Connect the uDIN8 connector of the interface cable to the *Datacap DialLink* modem to the PC/ECR port.
2. Connect the DB9 end of the interface cable to the intended COM port on the PC.

3. Connect one end of the RJ11 cable to the TELCO connector on the Datacap DialLink modem.
4. Connect the other end of the RJ11 cable to a working phone line jack. No other devices should be connected to this phone line and plain old telephone service (POTS) line is best.
5. Connect the transformer to the POWER connector on the Datacap DialLink modem.
6. Plug the transformer into a suitable 110VAC outlet. It is strongly recommended that a surge protector be used with the Datacap DialLink modem.

NETePay CONFIGURATION & TESTING

Introduction

This chapter explains how to activate and configure *NETePay* for use.

NETePay is sent to you as a fully functional software application for 10 calendar days before requiring entry of an activation code by Datacap Systems.

If *NETePay* has not been activated by Datacap within those 10 days, it will decline all requests and return a “Must Activate NETePay” message to the POS terminal, indicating that the initial activation period has expired.

You will then have the option to extend the activation period for one additional 10-day period via the activation screen. If an activation code is not entered during the second activation period, *NETePay* will decline all requests and return a “Must Activate NETePay” message until an activation code is entered.

Activation

During installation, *NETePay* generates a Session Code and Machine ID that are unique to that PC and required for permanent operation of *NETePay* on that machine.

Simply submit those numbers to Datacap by using one of the following methods to obtain an activation code:

- Contact the Sales Department at (215) 997-8989 and provide the two uniquely generated numbers. Datacap will register your software and provide you an individualized activation code.
- E-mail the numbers to Datacap and receive your activation code via return E-mail.

Send an email message to activate@dcap.com with **NETePay Activation** in the Subject line. The body of the message should contain:

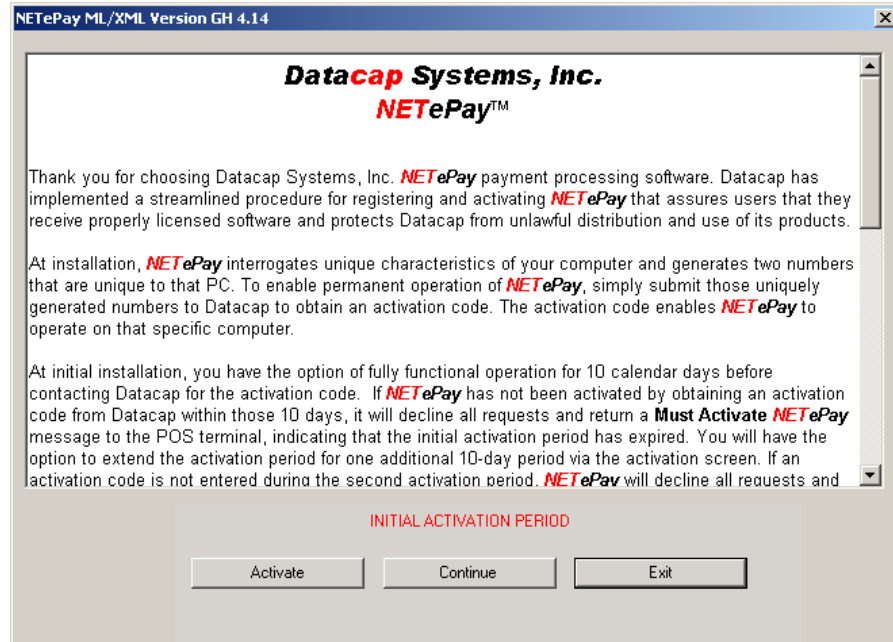
1. Your Name
2. Telephone Number
3. Serial Number
4. Session Code
5. Machine ID

The Serial Number, Session Code and Machine ID appear in the Activation dialog box and can be copied and pasted into the body of the E-mail message.

Configuration

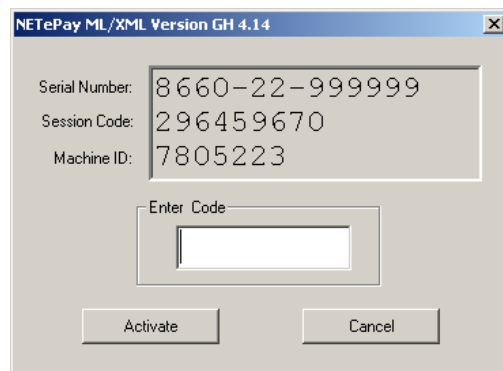
To activate and set up *NETePay* for use:

1. From the Desktop, double-click the **NETePay icon** The Initial Activation dialog box appears.

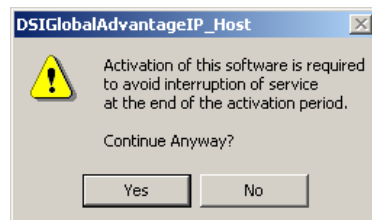


NOTE: The Initial Activation dialog box will appear each time you start *NETePay* until you activate it.

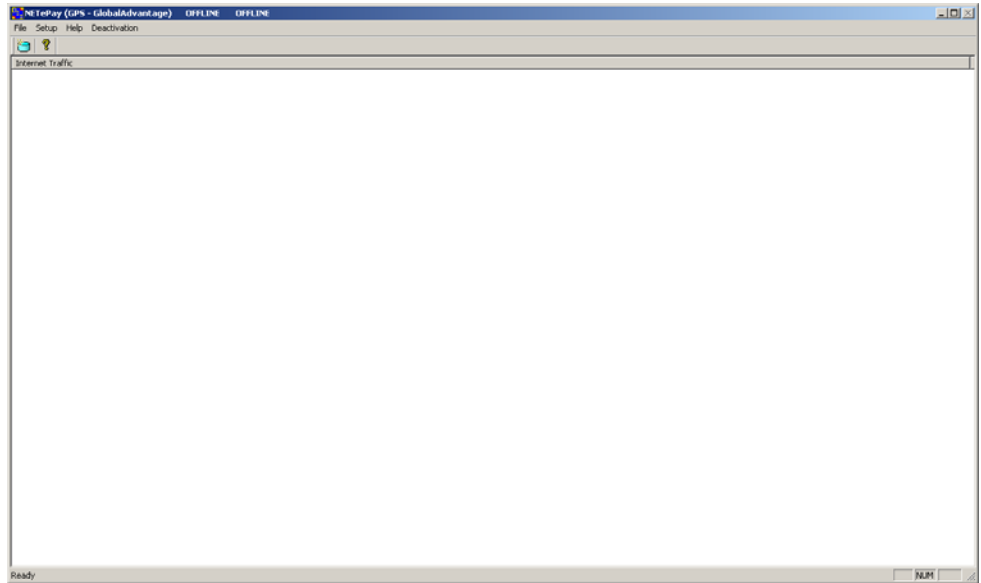
2. To enter the activation code, click **Activate**. When the activation dialog box appears, type the activation code in the box provided and click **Activate**



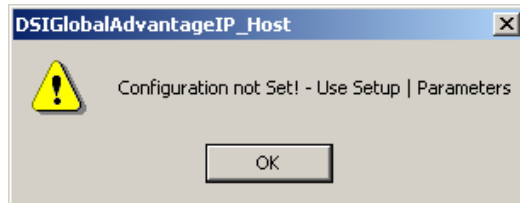
3. To proceed without activation, click **Continue**. When the message indicating that activation is required to avoid interruption of service appears, click **Yes** to continue.



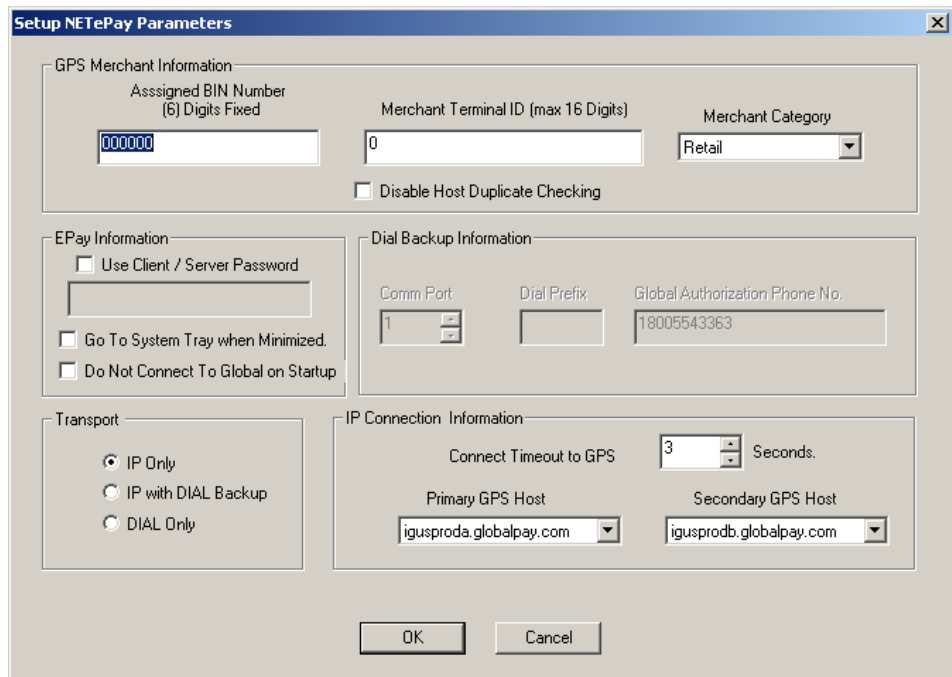
4. In either case, *NETePay* appears.



NOTE: During your initial access of *NETePay*, the following message will appear indicating that configuration is required. Click **OK** to continue.



5. From the *NETePay* menu bar, select **Setup** and choose **Merchant Parameters**. The Setup *NETePay* Parameters dialog box appears.



NOTE: You may click the *Read Me* button at any time to view the *Read Me* file with additional information on setting your configuration.

6. Under the **GPS Merchant Information** section, enter the Global Payment Systems Merchant Information including **BIN Number** (exactly 6 digits) and **Merchant Terminal ID** (exactly 12 digits). Select the **Merchant Category** assigned by GPS from the drop down list:
 - Retail
 - Restaurant
 - MOTO

The Merchant Information required for this section is supplied by GPS or your merchant services provider.

The checkbox “**Disable Host Duplicate Checking**” should be left unchecked unless instructed otherwise by Global Payment Systems.

7. Under **EPay Information**, you may also select whether you want to use password protection on communications between clients and the NETePay server. If you are using *NETePay* in a Wide Area Network (WAN) that uses an Internet connection, if you enable Client/Server password protection, it will prevent unauthorized use of *NETePay*. If you want to enable Client/Server Password operation, click the **Client/Server Password** box and enter the password to be used by the server in the box below the checkbox.

NOTE: You must also configure *DSIClientX* and *ePay Administrator* for Client/Server password protection using the same password to use this function.

The selection box **Go To System Tray when Minimized** is unchecked by default. If you want to have the NETePay icon appear in the System Tray rather than in the Toolbar when minimized, check this option.

The selection box **Don Not Connect To Global on Startup** is unchecked by default. When this box is unchecked, NETePay normally will attempt to connect to the Global server on startup to verify connectivity to the host. If you want to have the NETePay start regardless of IP connectivity to the host, check this option. This may be useful if there is a temporary ISP outage or other networking issue; however, *NETePay will not be able to process transactions unless a working Internet connection is available.*

8. Under the **Transport** section, you can select the method of communications to the Global Payment Systems processing host.
 - a) **IP Only** – Select this option if you want NETePay to use only the Internet to process transaction with the Global Payment Systems host.
 - b) **IP with Dial Backup** – Select this option if you want to use the Internet as the primary means of communication with Global Payment Systems and to have automatic direct dial backup operation occur when Internet service is interrupted. This option requires that you install a Datacap DialLink modem on an available COM port. *NETePay only operates with a Datacap DialLink modem for backup operations – third party modems are not supported.*
 - c) **Dial Only** – Select this option if you want to use the Datacap DialLink modem and phone line as the primary means of communication with Global Payment Systems. This option requires that you install a Datacap DialLink modem on an available COM port. *NETePay only operates with a Datacap DialLink modem for dialup operations – third party modems are not supported.*
9. Under the **IP Connection Information** section, you set the time in seconds to attempt an IP connection for each transaction before switching to dial for processing (if enabled). Allowable values are 3 to 40 seconds.

Two dropdown boxes are provided for the URLs of the primary and secondary GPS hosts. The default configuration lists **igusproda.globalpay.com** as the primary and

igusprodb.globalpay.com as the secondary. These URLs may be reassigned as primary or secondary as instructed by GPS.

10. Under the **Dial Backup Information** section, you set parameters related to dial backup.
 - a) **Comm Port** – Select the COM port number where the Datacap DialLink modem is attached. Make sure not to use a port number used by another device. Allowable ports are 1-255.
 - b) **Dial Prefix** – If the phone system being used with the Datacap DialLink modem requires dialing a prefix to get an outside or long distance line, enter it here. A ‘W’ (wait for dial tone) or a ‘,’ (comma – wait 2 seconds before dialing next digit) are the most common along with 8 or 9. For example “8,” would wait two seconds after going off hook before dialing the number in the Global Payment Systems Authorization Phone Number text box.
 - c) **Global Payment Systems Authorization Phone Number** – This number will automatically be filled in for the recommended access number to Global Payment Systems. You may change this number if you are having problems reliably communicating with the host. Contact your merchant service provider or Global Payment Systems directly to obtain alternate access phone number(s).
11. After completing the configuration settings, click **OK** to save the settings and exit the dialog box. If you want to quit without any changes being applied, click **Cancel**.

Testing

Important! - Before You Start

You should arrange with your bank and payment processor for testing *NETePay* and all other related components before going live. You should perform a sale and return transaction of \$1.00 for each card type you will be accepting using live credit cards. You should then verify with your processing provider that all transactions were credited properly.

It is the sole responsibility of the merchant account holder to verify that the merchant information entered into NETePay is complete and correct.

You should only process actual customer payments after you have verified with your merchant account provider that all test transactions have been successfully processed.

Operational Considerations

Important!

NETePay relies on numerous services provided by Windows and other Microsoft software such as MSDE or SQLExpress 2005. **Proper computer operation is imperative to ensure reliable NETePay operation and prevent possible loss and/or corruption of transaction data.**

The following operational guidelines *must* be observed to ensure reliable NETePay operation:

- *Always* quit NETePay from the File|Exit pull down menu before restarting or shutting down Windows.

- *Always* quit NETePay and then shut down Windows before turning off the computer power. Never turn off the computer power without first quitting NETePay and shutting down Windows.
- *Always* quit NETePay and shut down Windows before pressing the reset button on the computer.
- If the computer is subject to unplanned power losses, the use of an UPS (Uninterruptible Power Supply) is *highly recommended*.
- If you operate a backup copy of NETePay, you *must* procure unique terminal and/or merchant account information for each copy of NETePay from your processing provider. Operation of multiple copies of NETePay with identical merchant setup information may cause transactions to be lost or duplicated at your processing provider.

USING THE DSIClient TRANSACTION UTILITY

Introduction

This chapter explains how to use the *DSIClient Transaction Utility* program as a stand-alone application to test the operation of the NETePay server.

It is strongly recommended that you test each card type with the *DSIClient Transaction Utility* and verify that the processor has received the transactions into your merchant account.

NOTE: *Before you process any transactions using the DSIClient Transaction Utility, you should have NETePay running.*

Supported Transaction Types

DSIClient supports the following types of credit transactions via the keyboard, and/or a Verifone PINpad 2000:

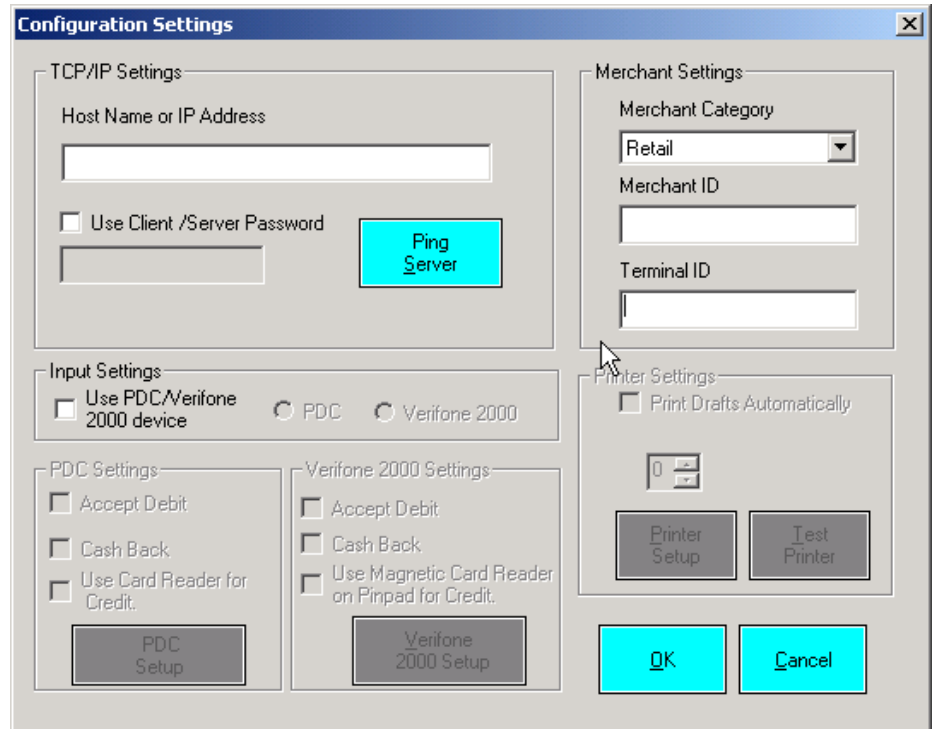
- **Credit Sale** – enables you to process a transaction for a payment for goods or services using a credit card (VISA, MasterCard, American Express, Discover, etc.).
- **Credit Refund** – enables you to issue a credit to the cardholder for the return or credit of goods or services using a credit card.
- **Credit Post Authorization** – enables you to process a transaction for which voice authorization code was obtained due to the payment-processing network being unavailable and places the transaction in the current batch for settlement and payment.
- **Credit Authorization Only** – enables you to authorize a credit card without settlement. In most cases, this transaction is used to determine if a credit card has sufficient remaining credit to process a sale.
- **Credit Void** – enables you to cancel a previously completed sale transaction in the current batch via a keyboard, PIN pad or magnetic card reader.
- **Override Duplicate** – enables you to force a network to authorize a credit transaction, when the first attempt for authorization resulted in a duplicate transaction error (such as “AP DUP”).
- **Debit Sale** - enables you to process a transaction for a payment for goods or services using a bank ATM card.
- **Debit Refund** – enables you to issue a credit to the cardholder for the return or credit of goods or services using a bank ATM card.

DSIClient Transaction Utility Setup

Before you can use the *DSIClient Transaction Utility*, you must configure it for use.

To setup the *DSIClient Transaction Utility*:

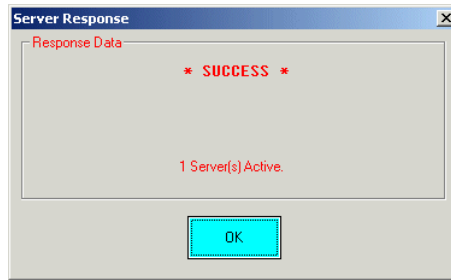
1. Launch *DSIClient* application, then select **File** from the *DSIClient* menu bar, and choose **Setup**. The Configuration Settings dialog box appears.



5.

2. Under TCP/IP Settings in the Server IP Address box, type the IP Address of the PC where NETePay is installed.
3. Under Merchant Settings, enter the Merchant Category, Merchant ID and Terminal ID entered during NETePay Configuration.
4. If you enabled NETePay for client/server password usage, then under TCP/IP, check the Use Client / Server Password box and type the same client/server password used when setting up NETePay in the box provided.
5. If you will be using a Datacap PDC (Peripheral Device Controller) or directly attaching a VeriFone 2000 PIN pad to your PC, then check the Use PDC/Verifone 200 Device box in the Input Settings section. This is only required if you will be testing Debit and/or EBT transactions.
6. If you checked the Use PDC/Verifone 2000 Device box, then you must select one of the radio buttons – check PDC if you have a Peripheral Device Controller attached to your PC or check Verifone 2000 if the pin pad will be directly attached to a PC serial port.
7. The Printer Settings section is not supported and requires no settings.

8. To test a connection to the server (the PC where NETePay is installed), click Ping Server. If a successful connection is made, a response message appears. It should show at least one active server.



9. If you do not get at least 1 Server Active, then verify that the IP address for the server is correct and that the NETePay server is running and try again. You must have at least one server active to process transactions.
10. Click **OK** to continue.
11. To configure the Verifone 2000 PIN pad for use with the *DSIClient* application, proceed to the next section. If will not be processing debit, then you should skip the Verifone 2000 PIN Pad setup section.
12. To save the settings and exit the Configurations Settings, click **OK**.

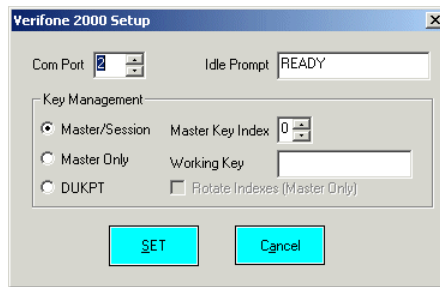
Verifone 2000 PIN pad Setup

To configure a Verifone 2000 PIN pad attached directly to a PC serial port to process debit and/or EBT transactions with the *DSIClient* application:

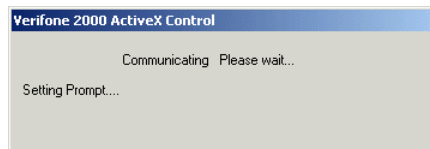
1. Connect the Verifone PINpad 2000 to an available serial port and record the serial port number for later reference.
2. In the DSIClient Settings window, in the **Verifone 2000 Settings** section, make the following choices:
 - a. To process debit transactions, check the **Accept Debit** box.
 - b. If you selected to accept debit and will offer cash back to the customer, check the **Cash Back** box.
 - c. To use the Verifone PINpad 2000's magnetic card reader to process credit card transactions, check the **Use the Magnetic Card Reader on PIN pad for Credit** box.

NOTE: By making a selection, the **Verifone 2000 Setup** button becomes active.

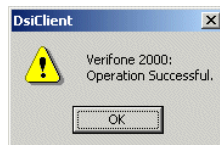
3. Click the **Verifone 2000 Setup** button. The Verifone 2000 Setup dialog box appears.



4. In the **Comm Port** box, select the number of the serial port that is connected to the Verifone PINpad 2000 (1-255).
5. If needed, you can change the prompt (up to 16 uppercase characters) that appears at the Verifone PINpad 2000's idle state.
6. Under **Key Management**, select one of the following options:
 - Select **DUKPT**
7. Click **Set**. The *DSIClient* application will then attempt to communicate with the Verifone PINpad 2000.



If the *DSIClient* application successfully communicates with the Verifone 2000 PINpad, the following message appears:



8. Click **OK** to continue.
9. To save the settings and exit the Configurations Settings, click **OK**.

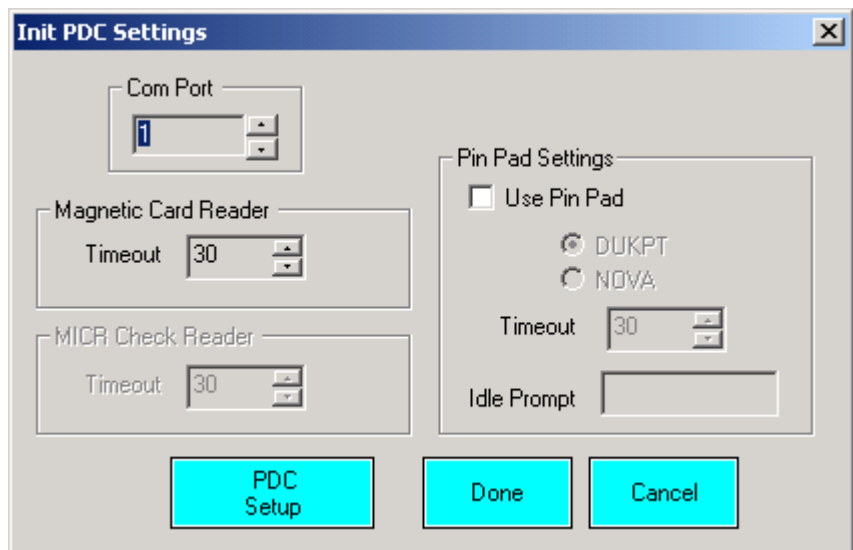
PDC Setup

To configure a PDC (Peripheral Device Controller) attached to a PC serial port to process transactions with the *DSIClient Transaction Utility*:

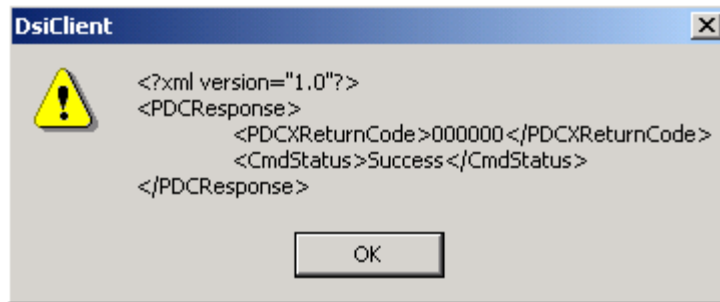
1. Connect the PDC to an available serial port and record the serial port number for later reference.
2. In the DSIClient Settings window, in the **PDC Settings** section, make the following choices:
 - To process debit transactions, check the **Accept Debit** box.
 - If you selected to accept debit and will offer cash back to the customer, check the **Cash Back** box.
 - To use an optional magnetic card reader attached to the PDC to process credit card transactions, check the **Use Card Reader for Credit** box.

NOTE: By making a selection, the **PDC Setup** button becomes active.

3. Click the **PDC Setup** button. Init PDC Settings dialog box appears.



4. In the **Comm Port** box, select the number of the serial port that is connected to the PDC (1-255).
5. If an optional magnetic card reader is attached to the PDC, in the **Magnetic Card Reader** section, set the **Timeout** box to the desired value.
6. If an optional PIN pad is attached to the PDC, in the **PIN Pad Settings** section, check the **Use PIN Pad** box and select the **DUKPT** radio button. Set the **Timeout** to the desired value. If desired, you can change the prompt (up to 16 uppercase characters) that appears at the PIN pad's idle state.
7. Click the **PDC Setup** button to initialize the attached PDC with the new settings. If the PDC is successfully initialized, a response as follows will be displayed:



If you receive a response where the `<CmdStatus>` is other than `Success`, recheck all connections to the PDC and try again. If you continue to experience problems, refer to the PDC Integration Guide which is in the Documentation folder within the *DSIClient* folder.

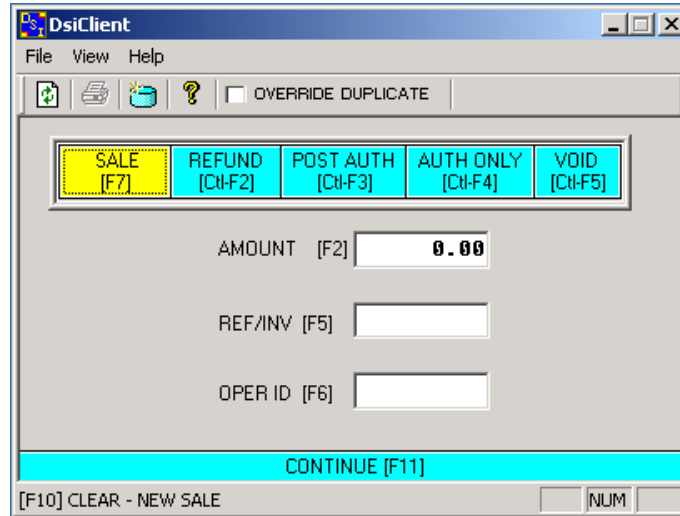
8. Click **OK** on the response.
9. Click **Done** on the **Init PDC Settings** window.
10. Click **OK** on the **Configuration Settings** window to get back to the *DSIClient Transaction Utility* main window.

Processing Test Transactions

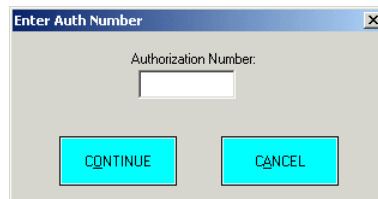
In order to process a transaction using the *DSIClient* application, *NETePay* must be running on the server.

To process a transaction using the *DSIClient Transaction Utility*:

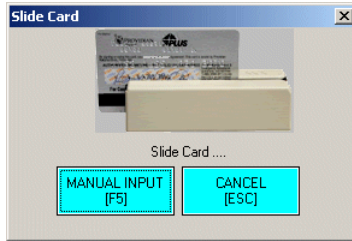
1. Launch *DSIClient*:



2. Using your mouse or action key(s), select the transaction type. The selected transaction type is then highlighted. The default transaction type is Sale (F7).
3. Type the transaction amount in the **AMOUNT** field
4. No entry is required for the **REF/INV** box.
NOTE: The *DSIClient* application only supports Retail category transactions.
5. If needed (this is a reference only field), type your name or ID number in the **OPER ID** box. (Operator ID).
6. If you want to force a network to authorize a transaction, when the first attempt for authorization resulted in a duplicate transaction error, check the **OVERRIDE DUPLICATE** box.
7. Click **CONTINUE** or press **F11**.
8. If required, the *DSIClient* application will prompt you for the entry of an authorization number.



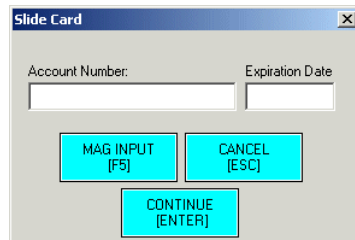
9. Type the number in the field provided, then click **CONTINUE** to proceed. The Slide Card dialog box appears.



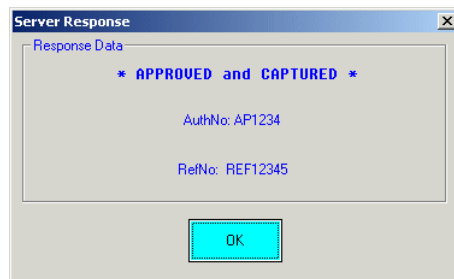
10. Either slide the credit card through the Verifone PINpad 2000's card reader or click **MANUAL INPUT**.

When using manual entry, the Slide Card dialog box will prompt you to enter an **Account Number** and **Expiration Date**.

NOTE: When entering the date use the format: *MMYY* (Month, Year).



11. After entering the account number and expiration date, click **CONTINUE** to process the transaction.
12. The system will then generate a response message either approving or declining the transaction



or



13. In either case, click **OK** to continue. If you receive a response with No Response from Any Server, verify that NETePay is running and that you have entered the correct IP address for the NETePay server in the DSIClient application setup.
14. You can now process another transaction. Press **F10** to clear the form.

INDEX

About		
Datacap	5	
NETePay	5	
Credit Authorization Only	22	
Credit Post Authorization	22	
Credit Refund	22	
Credit Sale	22	
Credit Void	22	
Determining the Encryption Strength	13	
DSIClient Transaction Utility		
Installation	14	
Processing Transactions	28	
Setup	23	
Supported Transaction Types	22	
DSIClientX Installation	14	
ePay Administrator Installation	14	
How it works	6	
Installation	10	
Installation Procedures	11	
Accessing the NETePay CD-ROM	11	
DSIClient Transaction Utility	14	
DSIClientX	14	
ePay Administrator	14	
Microsoft Internet Explorer	13	
NETePay	14	
Microsoft Internet Explorer		
Determining the Encryption Strength	13	
Installation	13	
NETePay		
Activation	16	
Configuration	17	
Installation	14	
Testing	20	
Network Requirements	11	
Override Duplicate	22	
Overview	5	
Requirements		
Network	11	
Server	10	
Server Requirements	10	
Upgrading Microsoft Internet Explorer	13	
Using the DSIClient Transaction Utility	22	
Verifone PINpad 2000 Setup	25, 26	
What's Included on your CD	5	